



MICHIGAN **GREEN** COMMUNITIES





MICHIGAN **GREEN** COMMUNITIES

What is MGC?



A sustainability benchmarking, networking, & technical assistance program for municipalities & counties



Accelerate environmentally sustainable actions by communities **to enhance Michigan's livability & economic competitiveness** in the 21st century global green economy



Benefits to Participating

- Free technical assistance
- Access to a peer network
- Easily create a roadmap of sustainability actions that work for your community



MGC Challenge Certification

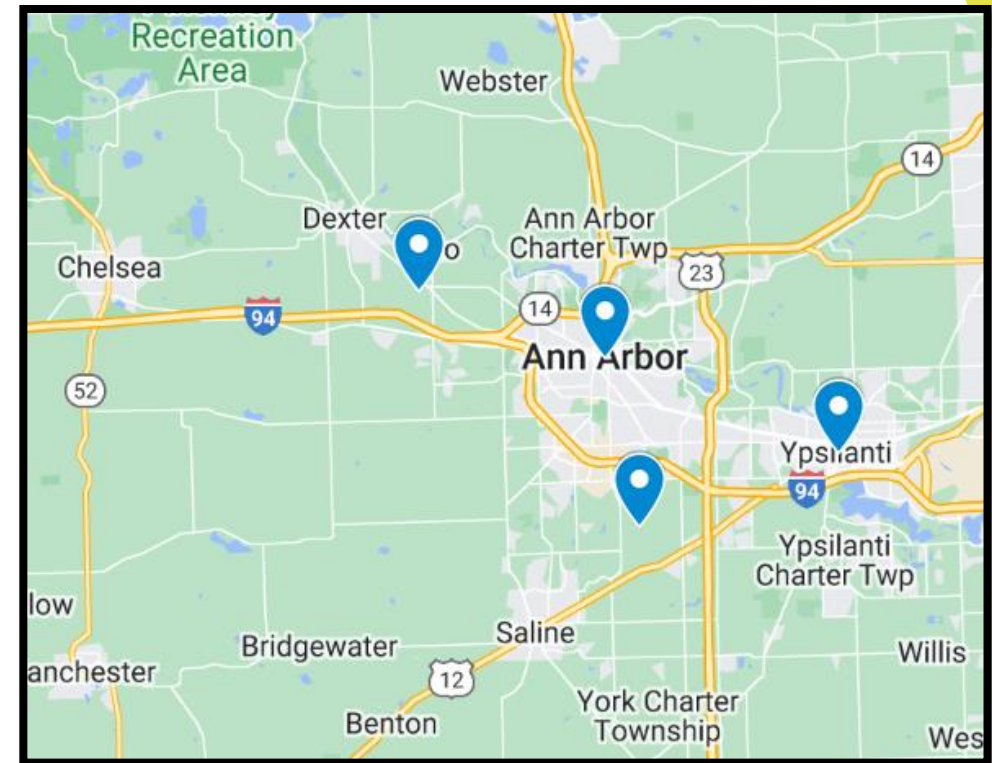


Bronze	20
Silver	60
Gold	100
Platinum	175 plus
New!	metrics

Washtenaw Co. Municipalities Participating in the MGC Challenge



- Washtenaw County - Silver
- Ann Arbor - Gold
- Pittsfield Charter Township - Gold
- Ypsilanti – Gold
- Scio Township – In Progress!



MGC Challenge Categories

1. Planning for Inclusive & Lasting Impacts
2. Climate Resilience & Adaptation
3. Energy Efficiency & Renewable Energy
4. Responsibly Managing Materials
5. Sustainable Land Use & Economic Development
6. Improving Health Outcomes
7. Protecting & Conserving Water Resources
8. Support Clean & Inclusive Mobility
9. Inspire & Mobilize Residents



CATALYST
COMMUNITIES

Resource Hub



Energy Efficiency and Renewable Energy



Improving Health Outcomes



Inclusive & Lasting Impacts



Land Use



Materials Management



Mobility



Residents



Resilience & Adaptation



Water

Energy Efficiency & Renewable Energy – Sample Action Items

- Conduct energy audits on public buildings/facilities
- Track energy use using ENERGY STAR (or similar tool)
- Develop (and implement!) plan for energy efficiency retrofits for municipal/county buildings and publicly-owned housing
- Inventory, develop plan to replace, and implement plan for municipal/county owned streetlights
- Create internal revolving loan fund for renewables & energy projects
- Update CIP to include renewable energy projects



MGC Challenge Tips

- All action items are within local government control in Michigan
- Goal is to do what makes sense for your community, not to complete all 127 action items and metrics
- Create a framework for prioritizing efforts
 - E.g. GHG reductions, equity, infrastructure needs, current resources/resource gaps, quality of life factors

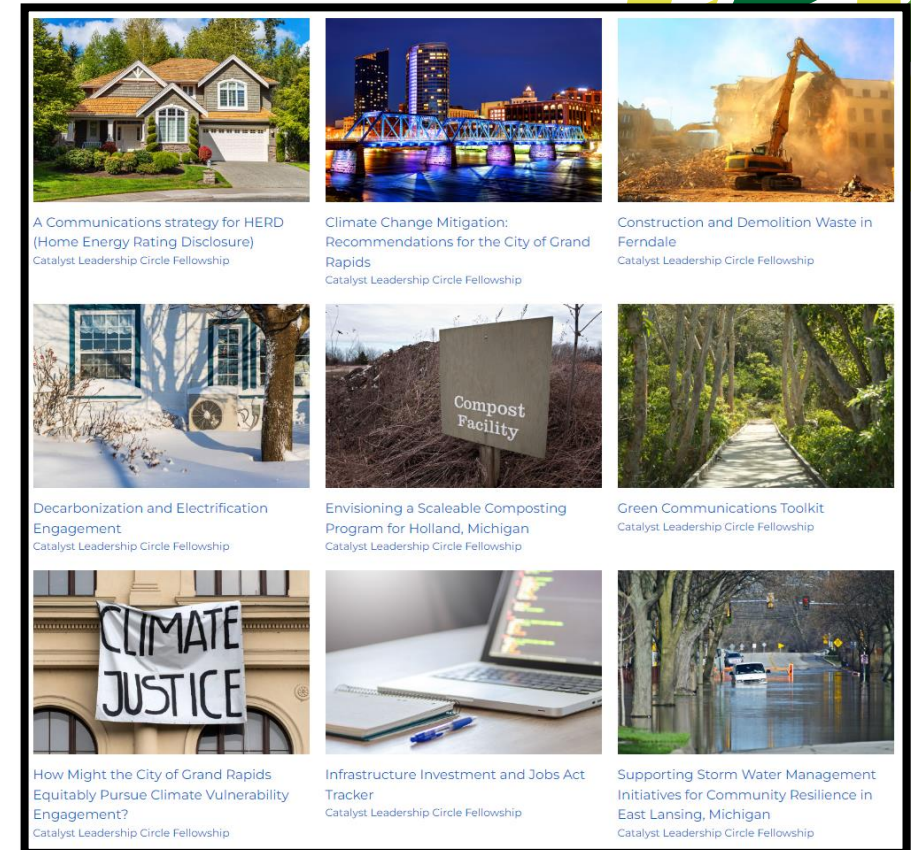


MGC Challenge Reporting Period Open Now

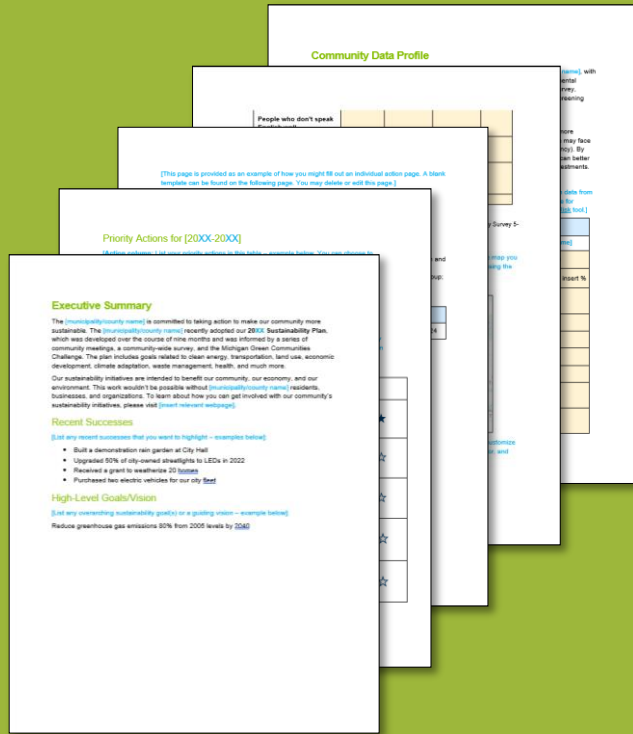
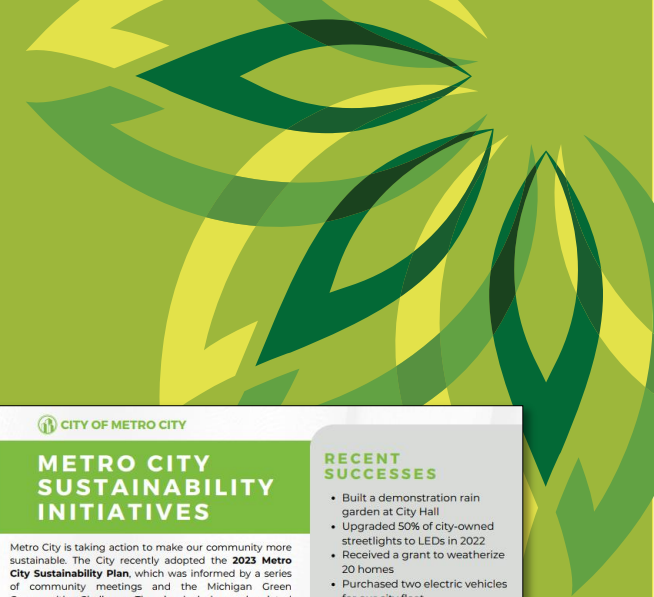
- Reporting open Jan. 1 – May 1
- Create/log into account
- Open Challenge form & select In Progress / Complete / Not Started / Not Applicable
- Complete metrics if able
- No documentation needed

Benefits to Participating in the Challenge

- Technical Assistance Cohorts
 - Accelerator Cohort
 - Catalyst Leadership Circle & Fellowship
- MISCON & MI Healthy Climate Conference Registration
- Additional Opportunities



Template Sustainability Plan Resource Kit



Goal Statement: <i>Enter climate resilience goal statement here.</i>					
Catalyst Communities Climate Resilience Resources			User Guide		
CATEGORY	SUBCATEGORIES & DESCRIPTIONS	ACTION ITEMS	Current Progress	Specific Tasks	Priority Level
Climate Resilience & Adaptation	Greenhouse Gas (GHG) Emissions <i>Inventory municipal and community greenhouse gas (GHG) emissions, noting your achievements and areas for improvement.</i>	1 Develop a municipal operations GHG inventory. 2 Develop a community wide GHG inventory and set GHG reduction goal. 3 Set goal for GHG neutrality by 2030 or earlier in all municipal operations.			
	Climate Adaptation & Resiliency Planning <i>Understand how climate change will likely impact your community and implement projects to adapt and prepare.</i>	4 Perform a climate vulnerability assessment that considers health and equity impacts. 5 Develop a climate adaptation and resiliency plan in collaboration with the community. 6 Provide incentives, support programs, and/or educational resources for businesses, households, and landlords to make improvements to properties that reduce GHG emissions and/or improve household-level resiliency to climate change (e.g., screens on windows & porches, improved insulation, tree planting, home gardening, bioswales, improved drainage & pervious surfaces).			
	Hazard Mitigation <i>Understand how natural or manmade hazards could affect your community and develop a plan to respond to hazards while taking steps to mitigate the effects of hazards now.</i>	7 Integrate hazard mitigation considerations and investments into community infrastructure plans. 8 Develop a hazard mitigation plan with climate projections included. 9 Implement hazard mitigation projects to address identified risks in the hazard mitigation plan (e.g., flood mitigation tree planting for heat reduction).			
	Green Buildings <i>Strive to lessen the impact of municipal operations on the local environment.</i>	10 Develop a green building policy for municipal facilities. 11 Achieve green building certification for a municipal building. 12 Achieve green building certifications for at least 75% of municipal buildings.			

CITY OF METRO CITY

METRO CITY SUSTAINABILITY INITIATIVES

Metro City is taking action to make our community more sustainable. The City recently adopted the **2023 Metro City Sustainability Plan**, which was informed by a series of community meetings and the Michigan Green Communities Challenge. The plan includes goals related to clean energy, economic development, climate adaptation, waste management, transportation, health, and much more. This document summarizes our **recent successes** and our **top five priority actions** for the next three years. Our sustainability initiatives are intended to benefit our community, our economy, and our environment. This work wouldn't be possible without Metro City residents, businesses, and organizations. To see the full sustainability plan and learn about how you can get involved with our community's sustainability initiatives, please visit www.metrocity.com.

RECENT SUCCESSES

- Built a demonstration rain garden at City Hall
- Upgraded 50% of city-owned streetlights to LEDs in 2022
- Received a grant to weatherize 20 homes
- Purchased two electric vehicles for our city fleet

KEY METRICS

- 5 miles of dedicated bike lanes
- 24% of municipal operations powered by renewable energy
- 30% tree canopy cover

VISION

Reduce greenhouse gas emissions 80% from 2005 levels by 2040.

PRIORITY ACTIONS FOR 2024-2026

Action	Impact
[insert priority action here]	★★★★
[insert priority action here]	★★★
[insert priority action here]	★★★
[insert priority action here]	★★
[insert priority action here]	★

Questions? Contact Sustainability Coordinator Roxanne Ritchie at roritchie@metrocity.gov

www.migreencommunities.com/plan



MICHIGAN GREEN COMMUNITIES

www.migreencommunities.com

First Steps

- Register for MGC Challenge account at www.migreencommunities.com/register
- Assess local government activities & log actions in MGC Challenge
- Reach out to Danielle Beard at dbeard@migreencommunities.com with questions





PARTNERS





MICHIGAN **GREEN** COMMUNITIES



www.MiGreenCommunities.com