

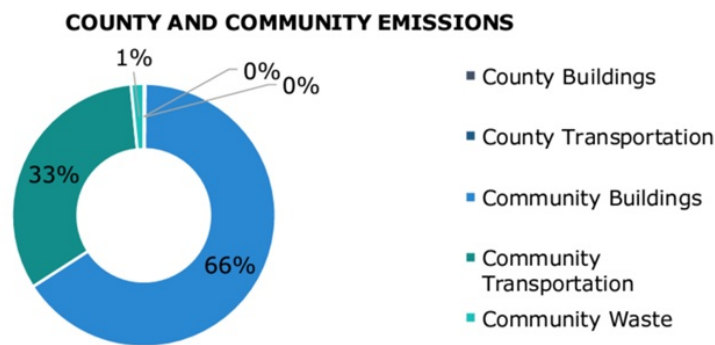
JANUARY NEWSLETTER



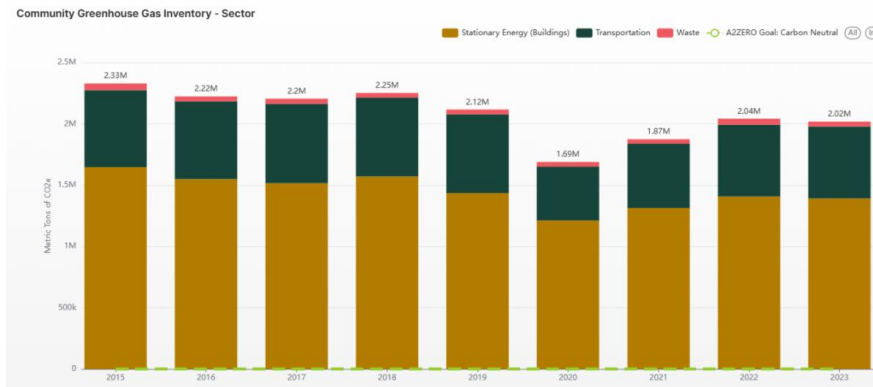
Transportation

Important statistics:

Transportation accounts for 1/3 of county's GHG emissions



Transportation accounts for 26 % of Ann Arbor's GHG emissions in 2023



Strategies from the U.S. National Blueprint for Transportation Decarbonization:

- **Changing travel habits:**
 - Walk, bike, or take public transit instead of driving
 - Carpool or use ride-sharing services
 - Reduce the number of miles you drive
- **Using more efficient vehicles:**
 - Drive an electric or hybrid vehicle
 - Use alternative fuels in flexible-fuel and dual-fuel vehicles
 - Maintain your vehicle regularly
 - Monitor your speed and acceleration
 - Reduce idling
 - Minimize aerodynamic drag
- **Using lower-carbon fuels**
- **Making power on-site with renewables**
- **Using climate-friendly energy resources**



JOIN THE 2025 TRANSPORTATION SURVEY

We welcome you to participate in the Washtenaw District 2030's employee transportation survey to gauge greenhouse gas emissions across Ann Arbor.

Join our fight to reduce greenhouse gas emissions by 50-65% by 2030 by completing this short and easy survey whose results will be emailed to you in a succinct and detailed report.

What can you gain from this?

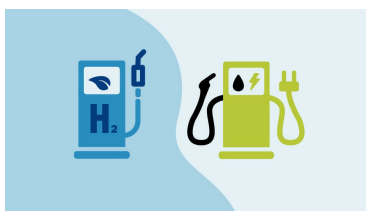
- Track commuting emissions by building
- Gain insights on how employees are commuting
- Learn how you can facilitate transportation alternative

Questions? Contact Us:
washtenaw2030survey@gmail.com

JOIN the 2025 Transportation Survey

Commercial and non-profit building owners & managers, start out 2025 by participating in Washtenaw 2030 District's Commuter Survey. Get your results by building and gain insights into reducing commuter transportation emissions. Our U-M Graham Scholars team will be reaching out to engage you in the survey OR you can reach them at washtenaw2030survey@gmail.com.

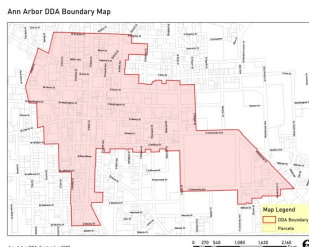
****Note the survey is administered by building owners & tenants to employees.**



Zero Emissions Bus Initiative

TheRide is excited to announce a recommendation for a zero-emission bus project. This initiative is a significant step towards reducing the agency's carbon footprint and aligns with TheRide's commitment to sustainable and environmentally friendly transit solutions. The recommendation includes two parts that will work together: a *hydrogen fuel-cell bus project*, with the addition of *hybrid bus replacements*.

[Read More](#)



go!pass | getDowntown

The go!pass is a great employee benefit, not to mention a great way to getDowntown! With a go!pass, employees who work at companies located in the Ann Arbor Downtown Development Authority's boundary area can ride any of TheRide's fixed route buses, receive discounts on other commuter services and get discounts at downtown Ann Arbor stores.



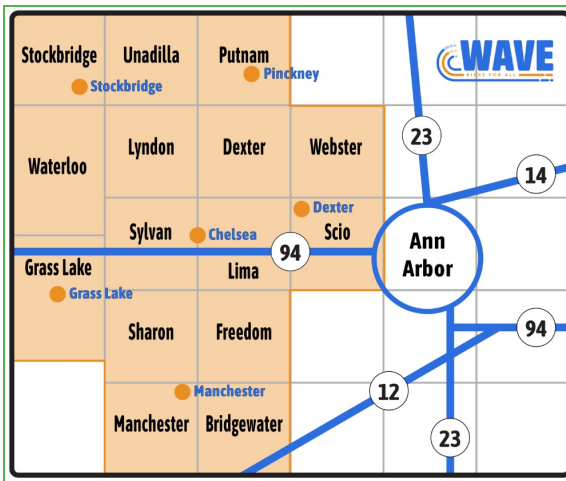
Washtenaw Avenue Express Route

Take the new Washtenaw Ave Express Route between Blake Transit Center and Ypsilanti Transit Center! With limited stops, Route 104 is your fast, reliable connection to everything this area has to offer. Operating every 30 minutes Monday-Friday from 6:00 a.m. – 6:45 p.m.

- U of M Central Campus Transit Center
- Washtenaw Ave. & Pittsfield Blvd.
- Washtenaw Ave. & Golfside Rd.
- Washtenaw Ave. & Cross St. near EMU

[Read More](#)

[Read More](#)



The W.A.V.E.

Live in Western Washtenaw?—you can ride the W.A.V.E. to anywhere in Washtenaw County. People with disabilities, people 60+ years of age, low income, and children through 12th Grade receive a 50% discount on all fares. Children 5 and under ride free. (Door-to-door from Western Washtenaw to anywhere in Washtenaw County.)

Work at U of M? Please complete this [survey](#) to help develop shuttle service.



Commercial EV Charger Program

Applications for the City of Ann Arbor's Commercial EV Charger Program are now live! With the goal of increasing the availability of publicly accessible EV chargers, the Commercial EV Charger Program provides an opportunity for commercial and multifamily property owners in Ann Arbor to receive up to four FREE level 2 EV chargers. To learn more about the program and view the application, visit osi.a2gov.org/evchargerprogram.



Community Workspace

Common Cycle provides a dedicated workspace with helpful volunteers and the tools you need to care for your bike. You are welcome to seek help from volunteers or maintain and repair your bike on your own. The volunteers range from experienced mechanics to interested newbies. Everyone is welcome: the only requirement for getting help is that you must be willing to get your hands dirty! Sundays 11AM -3PM

Check out the Transportation Resources section in our [Member Resource Hub](#)

Events



12-1 PM

[Register here](#)

Implementing the A 2 Zero Carbon Neutrality Plan 2025 Session I: SouthTown – creating a healthy, low carbon, resilient community

Speakers: Heidi Porscher-4M, Lisa Sauve and Adam Smith- Synecdoche
SouthTown, an eight-story, mixed-use housing complex at will add to Ann Arbor's housing stock, and be the tallest mass timber building in Michigan. The building will generate 100% of its energy from a solar pv system and a natural gas fuel cell system that is about two-thirds more efficient than DTE's grid. The complex will be independent from the DTE grid. The project both welcomes and builds community through outdoor spaces, pedestrian connections, and a variety of living spaces.



Climate Action in 2025 and Beyond: Creating a Resilient and Just Future in Michigan and Across the Globe

Join the University of Michigan community for a conversation on climate action focused on tackling the climate crisis, promoting sustainability, and centering environmental justice.

4:30 PM

Rackham Amphitheatre
915 E. Washington St.

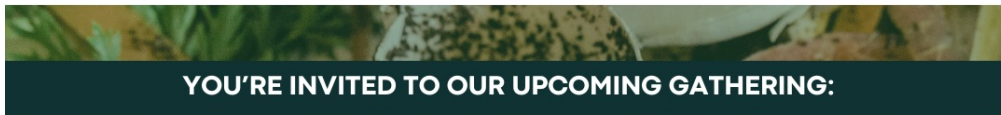
This town hall-style event will bring together voices from U-M and beyond to discuss the path forward, with insights on actions happening at the university, local, state, and federal levels. Sponsored by SEAS and Planet Blue. [Register by 1/10](#)



1 PM

Sustainability on a Shoestring Budget

Think sustainability is only achievable with a big budget? Think again. Join Foresight for Sustainability on a Shoestring Budget, a practical webinar designed to help organizations prioritize initiatives, collect meaningful sustainability data, and implement cost-effective strategies. Learn how to identify high-impact areas, track progress with limited resources, and leverage affordable solutions to improve energy efficiency, reduce waste, and engage stakeholders. They'll explore how data collection and prioritization can drive results, ensuring every dollar spent contributes to long-term sustainability goals. Whether you're a small business* or global organization, this session will provide actionable insights and tools to help you do more with less. [Register here.](#)



Preventing & Managing Food Waste in Food Business Operations



January 14th, 2:00-3:30 PM | University of Michigan South Quadrangle |
6:00 E Madison St, Ann Arbor, MI 48109



Conquer the Cold

An annual promotion that aims to show that it isn't as difficult to get to work without driving as it may seem in the winter months. Through education, outreach, and different challenges, the campaign aims to help commuters overcome the potential barriers of changing their patterns in colder weather.

Individuals participating in Conquer the Cold can log their trips on the getDowntown

Save the Date!



**CONQUER
THE COLD**

THE CHALLENGE RETURNS JANUARY 20–FEBRUARY 20



challenge website and earn rewards based on their participation. Find commuting resources [here](#).



Save Money & Save the Planet

Presentation about home efficiency, electrification and incentives

Free

When: Sunday Jan. 12 3:00 - 4:30

Where: Westgate Library, 2503 Jackson Ave, Ann Arbor



Ambassador Applications Open
The A2ZERO Ambassador Program is a 12-session training program that hosts community members to explore pathways for advancing local sustainability initiatives, resilience, and carbon neutrality in Ann Arbor. Sessions are held on Wednesday evenings from 6:30 p.m. to 8:30 p.m. EDT and include in-person and hybrid components. Apply [here](#).

DETROIT
2030
DISTRICT®

2025 KICKOFF PARTY & FUNDRAISER

Roostertail Detroit
January 30th, 2025
4:30-7:30 PM



Keynote speaker
Robert C. Riney
President & CEO

HENRY FORD HEALTH

Henry Ford Health is leading the charge in healthcare sustainability, setting an ambitious goal to achieve net-zero operational emissions by 2050.

Semi-formal attire, sit-down dinner, silent auction, vendor tables & more!

Visit 2030districts.org/Detroit for tickets

Thank you to our funders:

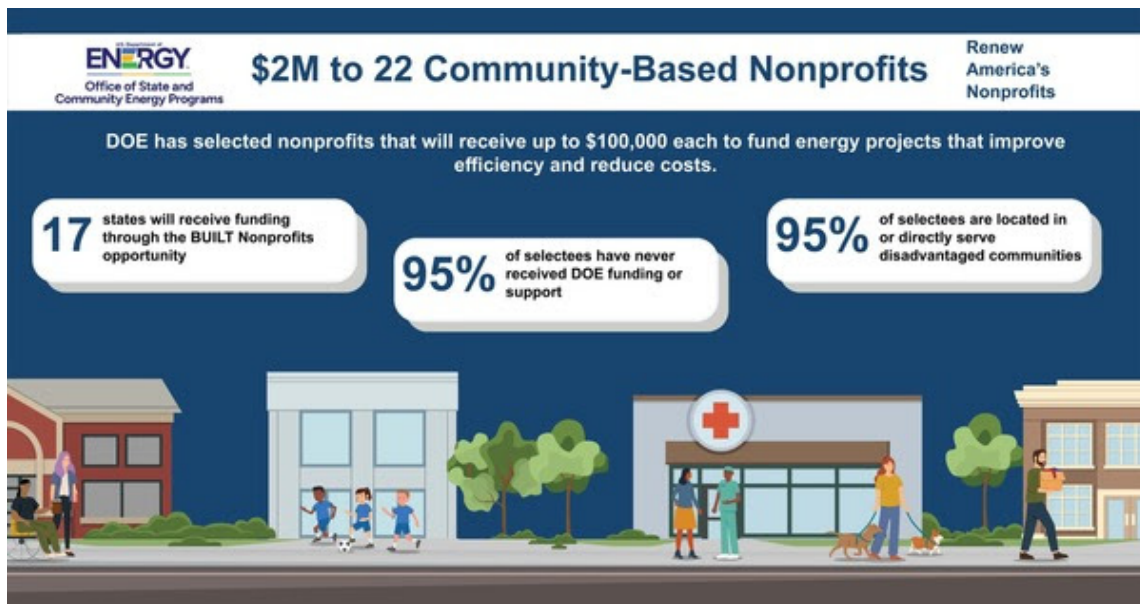
EGLE DTE

News

Peace Neighborhood Center was selected for a BUILT award!

The A2 / W 2030 District provided a free energy audit to assist with demonstrating need and energy efficiency project paybacks and emission reductions.

Congratulations PEACE Neighborhood Center!



Congratulations [Solar Faithful](#), [EcoWorks](#) and [Michigan Interfaith Power & Light](#) !!!

The EPA is giving \$ 20 million to houses of worship across Detroit to help disadvantaged communities tackle environmental projects aimed at everything from reducing pollution to preparing for extreme weather emergencies.

The initiative also includes installing EV charging stations and creating a ride share program. People will be able to rent EVs from the "resilience hubs" and use them to drive to work or elsewhere.

"This volume of money will allow us to finally do so much within the organizations to allow them to get to solar. You can't get to solar without weatherization and energy efficiency," - Briana DuBose EcoWorks Executive Director.

[WXYZ News Video](#)
[Detroit News Article](#)



Contribute to the A²ZERO COMMUNITY COOKBOOK

Are you a passionate home cook who enjoys cooking with local, seasonal ingredients?

Is there a delicious plant-forward recipe you love?

Do you have a strategy for fighting food waste?

We are seeking submissions for a climate-friendly community cookbook - a free and practical resource for sustainable eating in the Ann Arbor area!

Submit your favorite recipes, sustainable food tips, and stories of community food leaders by **February 1st, 2025!**

To get involved and for more info:

<https://osi.a2gov.org/cookbook>



We ride in an autonomous vehicle- by [Larry Deck](#)

It's December 17, 2024 in Ann Arbor. The ride manager pushes some buttons on his phone, and the unoccupied May Mobility vehicle pulls up to the door to pick us up. The van is a production vehicle that has been modified with various sensors -- radar, lasers, and cameras -- connected to software and actuators. We get into the back seat (no one is in the front seat), the manager pushes some more buttons, and we're off on a loop of about three miles on Stadium, Packard, King George, Eisenhower, and South Industrial. An interior screen displays how the software abstractly represents the street and the locations of pedestrians, bicyclists, and other vehicles. The van proceeds conservatively down the street and around corners. We slow down for speed bumps. We stop for a hypothetical drop-off and pickup. We then go back toward our starting point, we slow down, the steering wheel turns, and we stop and get off. The manager pushes more buttons, and the van leaves to park itself. Our ride is part of the demonstrations and testing that May Mobility is doing in cooperation with local partners to field a fleet of autonomous vehicles to complement other mobility options.

Member Resources

A2 Green Business Challenge (A2GBC)


A new framework to recognize, support, and celebrate local businesses working to advance sustainability in the community. Co-created by

the Ann Arbor Office of Sustainability and Innovations and Ann Arbor SPARK, this new program will help local businesses:

- lower operating costs
- create a stronger brand
- build a more sustainable culture
- enhance employee and customer satisfaction
- reduce their environmental impact.

[Learn more](#)


GREEN BUSINESS CHALLENGE
7 AREAS OF SUSTAINABILITY


 Energy

 Resilience

 Water Stewardship

 Education

 Circular Economy

 Supply Chain

 Mobility

Residential Energy Rebates

Learn about the Residential Energy Rebates at osi.a2gov.org/rebates. These rebates will help Ann Arbor residents make improvements to their homes and invest in cleaner transportation options to reduce carbon emissions, lower energy usage, and help move the City towards our A²ZERO goal of a just and equitable transition to community-wide carbon neutrality by 2030. Stay up to date with this and other programs in [The Charging Station](#), a newsletter of A²ZERO.



Michigan's Home Energy Rebates (MiHER) Launching Statewide early 2025



The IRA provided \$8.8 billion for home energy rebates, divided into two types: Home Efficiency Rebates to lower the upfront cost of whole-home energy efficiency upgrades, and Home Electrification and Appliance Rebates to reduce the upfront cost of efficient electric technologies like heat pumps and electric water heaters. The pilot makes Michigan “the first state in the Midwest to launch both of the Home Energy Rebates’ two component programs,” EGLE said in a statement. [Learn more](#)



Portfolio Manager Update: Your 1–100 ENERGY STAR score and other metrics may change this January

This January, the data used in Portfolio Manager[®] to [normalize your energy use for weather](#) will change. This change may impact your ENERGY STAR score and your weather-normalized energy metrics. We recommend you preview your future [ENERGY STAR score now](#).

Energy Management Grants

Ann Arbor / Washtenaw 2030 District 2024 Energy Management Grant Program. Member buildings are eligible for grant funding for Energy Audits, Retro Commissioning and Electrification Plans. We support you wherever you are on your carbon neutrality journey. Contact: jculbertson@2030Districts.org if you are interested in learning more.



Thank you to our 2030 Statewide Supporters

Supporters



Silver Supporters





Ann Arbor / Washtenaw 2030 District | 115 E Liberty St | Ann Arbor, MI 48104 US

[Unsubscribe](#) | [Constant Contact Data Notice](#)



Try email marketing for free today!