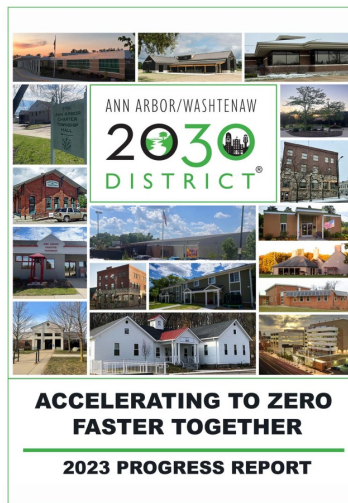


# AUGUST NEWSLETTER



## ANN ARBOR / WASHTENAW 2030 DISTRICT 2023 ANNUAL REPORT



### The Carbon Sweet Spot

Ultimately, the report suggests a process by which decision-makers can identify the whole life-cycle carbon “sweet spots” for their buildings, aiming for the most value with the least environmental impact.

Read the full report for more detailed insights and strategies to navigate the

### Pumping Up Sustainability Report

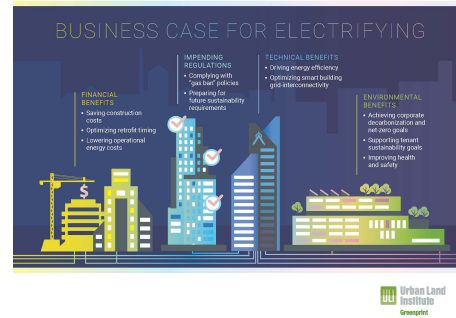
In a [new report](#) by ULI’s Randall Lewis Center for Sustainability in Real Estate and ASHRAE, Pumping Up Sustainability/ experts break down myths around heat pumps.



complex landscape of building decarbonization and find the carbon sweet spot for your projects.

[Read More](#)

Are you a property owner or manager who will be replacing equipment and would like to consult with an engineer for free on the options? Contact [jculbertson@2030districts.org](mailto:jculbertson@2030districts.org) to coordinate the consultation.



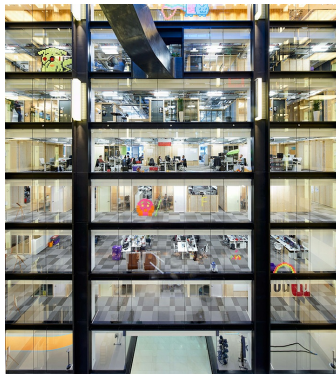
## Why State Climate Plans Prioritize Upgrades to Homes and Buildings - RMI

US states across the country are planning near-term actions to improve buildings, support health, and boost economic opportunity.

[Read More](#)

## Electrify: The Movement to All-Electric Real Estate

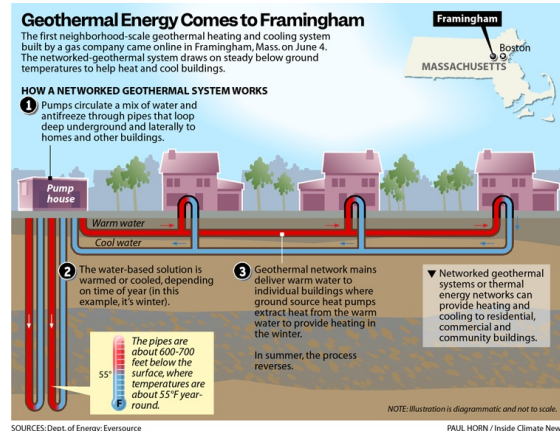
[Read More](#)



## Carbon Accounting | Trim Tab

The new version of our Zero Carbon certification will advance our guidance on carbon accounting for buildings in a variety of areas including embodied carbon, refrigerants, the integrity of carbon markets, and more. But the most exciting aspect of this work for me is that we are including explicit guidance for existing buildings seeking certification without major capital investments.

[Read More](#)



## First-in-the-Nation Geothermal Heating and Cooling System Comes to Massachusetts - Inside Climate News

An unusual partnership between an energy company and climate advocates could speed decarbonization efforts.

[Read More](#)

## Global Fashion Industry and Circularity

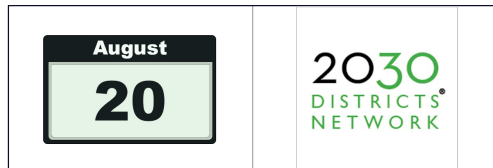
Majority of brands continuing to work within the confines of traditional linear models and making—at least from an ecological point of view—suboptimal choices at nearly every step in the process, from raw material selection to consumer education.

The Kearney CFX 2024 report: Navigating material and product choices as key unlocks to circularity



[The Kearney CFX 2024 Report: Navigating material and product choices as key unlocks to circularity](#)

## Events



**12 - 1 PM**  
Register [here](#)

### Building Electrification Case Study - The Empire State Building

Join the 2030 Districts Network webinar featuring a case study on Building Electrification. Learn how the Empire State Realty Trust is transforming the Empire State Building into an all-electric building to meet NYC Local Law 97 requirements. Discover the winning strategies at work on one of the world's most iconic buildings and learn how you can apply these same tactics to transform your own facilities! Speakers, Sarah Moore and Astrid Sardinas from Buro Happold, will discuss their work on this project, detailing the upgrades and processes involved.

### Ypsi Market Summer Bash

Celebrate National Farmers Market Week on **August 10** from **9 am to 1 pm** at **100 Rice St** with the first annual Summer Bash!

This summer celebration farmers market will include a garden bed giveaway, water fun, giveaways, a DJ and more!



## New Members



[Concordia University](#)



[Weber's Boutique Hotel and Restaurant](#)

## News



## Detroit, Ann Arbor transit systems getting a green boost - WDET 101.9 FM

Detroit Department of Transportation will replace 25 old diesel buses with new clean energy models, thanks to a \$30.8 million federal grant.

[Read More](#)



## HOAs in Michigan lose veto power over rooftop solar, home EV charging and more

Gov. Gretchen Whitmer signs legislation to invalidate certain HOA rules that block energy-efficiency measures.

[Read More](#)

## Downtown Ann Arbor Parking Structure Construction - 4th & Washington Structure

Parking availability will be significantly reduced throughout the month. Work includes concrete repairs, deck coating, and plumbing. We suggest parking at the Library Lane or 4th & William structures where there is ample parking.

## Member Resources

### City of Ann Arbor - Benchmarking Extension

For covered buildings or properties 100,000 square feet or greater:

- 2024 deadline: extended to September 1, 2024. Enforcement for buildings out-of-compliance will begin after September 1.
- Covered buildings or properties 100,000 square feet or greater must benchmark 2021, 2022 and 2023 calendar year data by September 1, 2024.

Property	Initial Reporting Date	New Initial Reporting Date	Years Required to Benchmark by Deadline
Covered Non-City Properties ≥100,000 sq. ft.	June 1, 2022	September 1, 2024 (next deadline: June 1, 2024)	2021, 2022, 2023 (2021, 2022, 2023 and 2024 by June 1, 2025)
Covered Non-City Properties ≥50,000 sq. ft.	June 1, 2023	June 1, 2025	2022, 2023, 2024
Covered Non-City Properties ≥20,000 sq. ft.	June 1, 2024	June 1, 2025	2023, 2024



### City of Ann Arbor Office of Sustainability and Innovations Residential Energy Rebates

Learn about the Residential Energy Rebates at [osi.a2gov.org/rebates](https://osi.a2gov.org/rebates). These rebates will help Ann Arbor residents make improvements to their homes and invest in cleaner transportation options to reduce carbon emissions, lower energy usage, and help move the City towards our A<sup>2</sup>ZERO goal of a just and equitable transition to community-wide carbon neutrality by 2030.

### Energy Management Grants

Ann Arbor / Washtenaw 2030 District 2024 Energy Management Grant Program. Member buildings are eligible for grant funding for Energy Audits, Retro Commissioning and Electrification Plans. We support you wherever you are on your carbon neutrality journey. Contact: [jculbertson@2030Districts.org](mailto:jculbertson@2030Districts.org) if you are interested in learning more.



**Thank you to our 2030 Statewide Supporters**

Supporters



Silver Supporters



Ann Arbor / Washtenaw 2030 District | 115 E Liberty St | Ann Arbor, MI 48104 US

[Unsubscribe](#) | [Constant Contact Data Notice](#)



Try email marketing for free today!