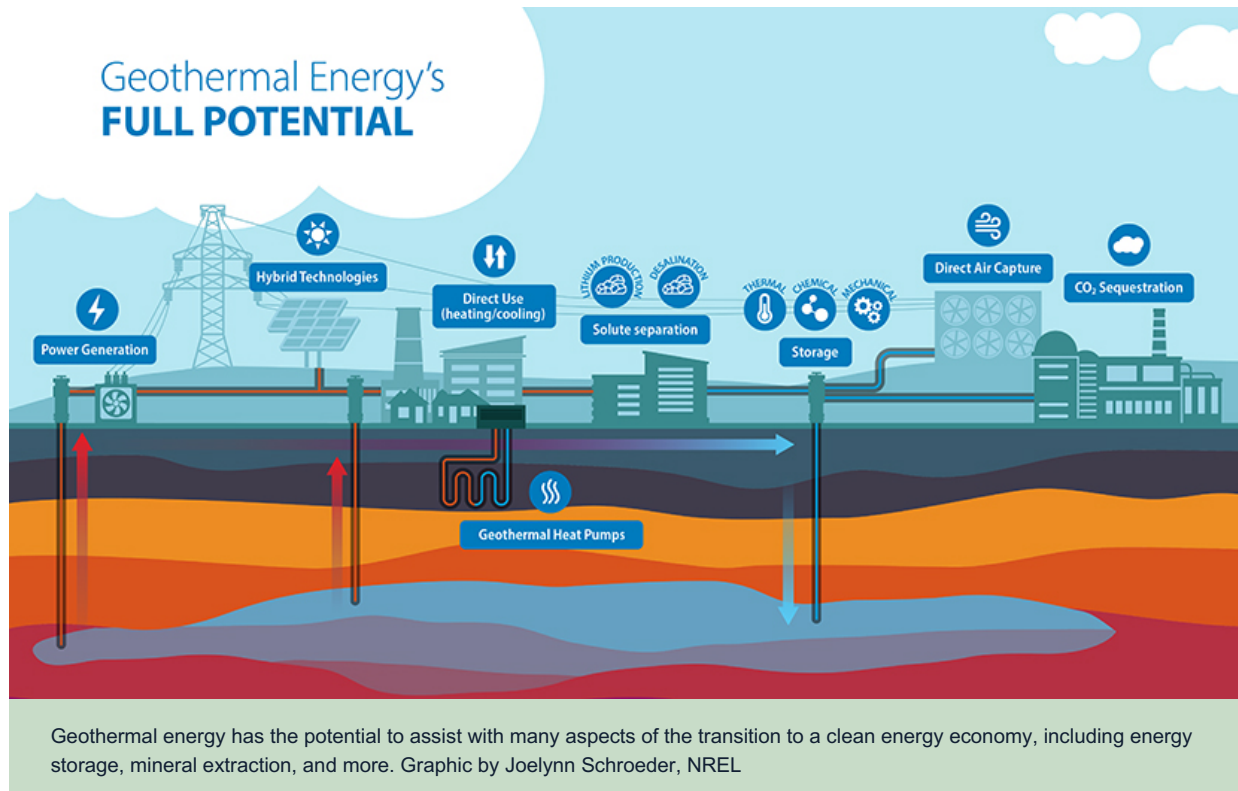


APRIL NEWSLETTER - EARTH MONTH



Geothermal Energy: Energy from the Earth

Full Steam Ahead: Unearthing the Power of Geothermal

Lesser Known Than Some of Its Renewable Energy Cousins, Geothermal Energy Is Now on the Rise Thanks to Its Ability To Provide 24/7 Power, Heat, Cooling, Critical Minerals, and More Geothermal energy—literally “heat from the Earth”—may be hard to see, but thanks to increasing public interest and outreach it is not hidden anymore.

[Read More](#)

While geothermal power plants have delivered renewable power for more than 100 years, recent research and advancements have shown that geothermal is more than a 24/7 clean power source.



What is Geothermal?

Renewable Energy from the Earth
The Geothermal Spectrum

Treasure Under Your Feet! Resource Hub

Educational Material, Conference Paper Database, Geothermal Energy Database, Geothermal Energy Standards, Geothermal Sustainability Assessment Protocol (GSAP) and more.

[Read More](#)

Geothermal Energy—or Earth Heat—is a clean, abundant, and renewable natural resource that is helping us meet our environmental vision. Geothermal heat pumps can be installed almost anywhere and are an ideal way to heat and cool our homes, schools and workplaces.

[Read More](#)

Earth Month @ U-M

Celebrating a legacy of campus sustainability and spurring urgent future action The University of Michigan is commemorating Earth Month with a series of exciting events across campus.

[Read More](#)



Food Waste Prevention Week

Join together with 500+ Partners /Sponsors from around the world to educate and inspire action around food waste in this week-long online and in-person event, April 1-7, 2024!

[Read More](#)

Events

--	--

Implementing the A²ZERO Carbon Neutrality Plan Session 4: What's New in Geo? An overview and update. *Can we reduce field sizes by up to 80%?* Speakers: Roshan Revankar, P.E. and Stephen Hamstra, P.E. of Genesys Geothermal [Register here](#)

--	--

Embodied Carbon 101 Webinar Join Kelsey Wotila, Senior Sustainability Project Manager at Foresight Management to learn more about embodied carbon, available tools, and how to analyze it for your projects. [Learn more](#)

--	--

Annual Spring 2024 10,000 Trees Giveaway Residents of Washtenaw County are eligible to register to receive up to four free trees to take home and plant on their property! [Learn more](#)

--	--

Bicentennial Bikeapalooza Hosted by Ann Arbor DDA and Bicycle Alliance of Washtenaw there will be cargo bike demos, giveaways, face painting, fun activities and more!! [Learn more](#)

You're invited to a webinar

CREATING A MORE RESILIENT WASHTENAW

Reducing energy use, costs, and greenhouse gas emissions in municipalities' buildings

This webinar is presented by:



April 11th, 2024



12-1pm



Virtual

BUILDING PERFORMANCE STANDARDS

THE IMPACT ON LOCAL REAL ESTATE MARKETS

APRIL 16TH - 12-2 PM EASTERN - ZOOM WEBINAR



EMILY SALZBURG
MANAGING DIRECTOR
Building Standards and
Performance | Washington
State Department of Commerce



KIM CHESLAK
SENIOR TECHNICAL ADVISOR
Building Energy Codes Program
Pacific Northwest National
Laboratory



DEVON STOPPS
SENIOR ENGINEER
Public Energy Initiatives,
Existing Buildings, City of
Toronto



MARSHALL OUER-BALKIND
DIRECTOR OF POLICY
PROGRAMS
Institute for Market
Transformation



MICHIGAN DEPARTMENT OF
ENVIRONMENT, GREAT LAKES, AND ENERGY

Public Input Sessions

- April 4, 1:30 p.m. – 3:30 p.m., Grand Rapids
- April 9, 1:30 p.m. – 3:30 p.m., Detroit
- April 11, 1:30 p.m. – 3:30 p.m., Flint
- April 16, 1:30 p.m. – 3:30 p.m., Marquette
- April 22, 1:30 p.m. – 3:30 p.m., Roscommon

[Register here for in person sessions](#)

April 24, 10:30 a.m. – 12:00 p.m., Closing
Listening Session

[Register on Catalyst Communities Webinars for
virtual session](#)

Or provide input by submitting your comments
or suggestions via [email](#).

EGLE will host a mix of virtual and in-person engagements sessions across Michigan to diversify input, discuss localized context, and to accommodate those that could not make regional in-person meetings. The agenda will start with education around the DOE HER Programs, with most of the session focused on hearing top priorities in your community, barriers to implementation, and environmental justice considerations in formulating potential implementation projects.



Basics of Benchmarking | Complying with Ordinances

Are you a building owner who needs to comply with a mandatory benchmarking requirement? Do you have little or no experience using EPA's Portfolio Manager tool?

Sign up for the 2024 series to attend live or find recordings and details at the link below.

[Read More](#)

New Members



[Ann Arbor Apartments](#)



[Saga Ann Arbor](#)



[Upland Green](#)



[First Unitarian Universalist Church of Ann Arbor](#)



[Ypsilanti Community Schools](#)

News



CAM Magazine March 2024

AIA-MI Design Perspectives:
Leading By Example - Michigan a National Leader in Federal Climate Investments and Transformative Clean Energy Policy by Jan Culbertson, FAIA



Ann Arbor Home Energy Rating Disclosure Ordinance in Effect March 12

Starting Tuesday, March 12, 2024, the Home Energy Rating Disclosure (HERD) ordinance takes effect.

[Read More](#)

[Read More](#)



GLREA

GLREA's comments on the ballot initiative to repeal Public Acts 233/234 that enacted new policies and procedures for the siting of utility scale wind, solar and storage projects.

[PA 233/234 Siting for Utility Scale Solar & Wind Farms Talking Points](#)

[Get involved and become a member](#)



A2 Climate Teach-in March 10, 2024

Looking Back at the Teach-in -- to Help You Move Forward

2nd Annual Climate Teach-In
Videos and Pictures and Bonus Content



Photo by Devin Gauger

Slides

[Freeman Environmental Youth Council](#)

[Missy Stults, PhD](#)

[Human Electric Hybrids](#)

[City of Ann Arbor Transportation](#)

[Ann Arbor / Washtenaw 2030 District](#)

[Third Act MI](#)

[AFP Consulting](#)

[Citizen's Climate Lobby](#)



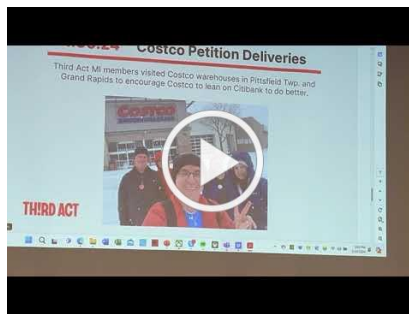
Climate Action Toolkit

[HERE](#)

Local organizations where you can join with others to take action [HERE](#)



Videos from 1st Annual Teach-in



What's Next?



Look for information coming soon!

If you'd like more information or to sign up for the Climate Teach-in newsletter send an [email here](#).



ANN ARBOR/WASHTENAW



Energy Management Grants

Ann Arbor / Washtenaw 2030 District 2024 Energy Management Grant Program. Member buildings are eligible for grant funding for Energy Audits, Retro Commissioning and Electrification Plans. We support you wherever you are on your carbon neutrality journey. Contact: jculbertson@2030Districts.org if you are interested in learning more.



City of Ann Arbor Benchmarking Ordinance 2024

All commercial and multifamily parcels with buildings totaling 20,000 SF or more are required to benchmark by June 1, 2024. More information can be found [here](#), such as how to file for an extension and the covered buildings list. The A2 2030 District is here to help you through the process. Contact: a2benchmarking@2030districts.org

Eliminate your Scope 2 emissions today by enrolling in [DTE's MIGreen Power Plan](#). It is now priced less than your regular power! Available for residential and business accounts. Contact jculbertson@2030Districts.org if you are a building owner/manager with multiple properties and the 2030 district can connect you with a MIGreen Power representative.

Thank you to our 2030 Statewide Supporters

Supporters



Silver Supporters



ANN ARBOR/WASHTENAW



Ann Arbor / Washtenaw 2030 District | 115 E Liberty St, Ann Arbor, MI 48104

[Unsubscribe annarbor@2030districts.org](mailto:unsubscribeannarbor@2030districts.org)

[Constant Contact Data Notice](#)

Sent by annarbor@2030districts.org powered by



Try email marketing for free today!